

# DPC-10

Hitec Brushless Servo PC Programming Interface



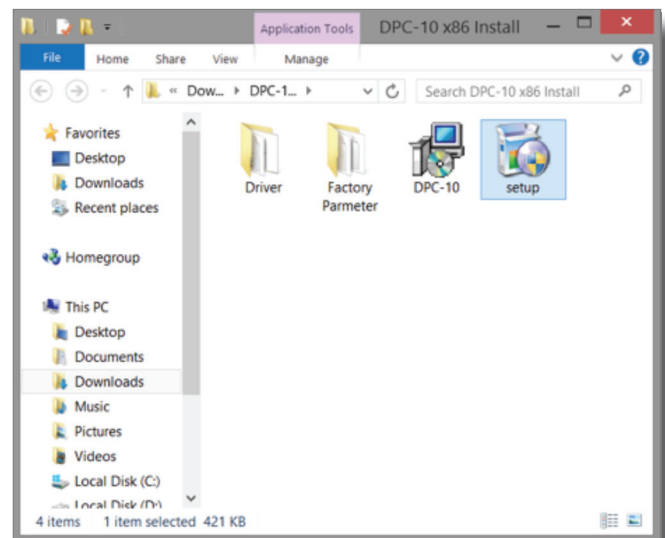
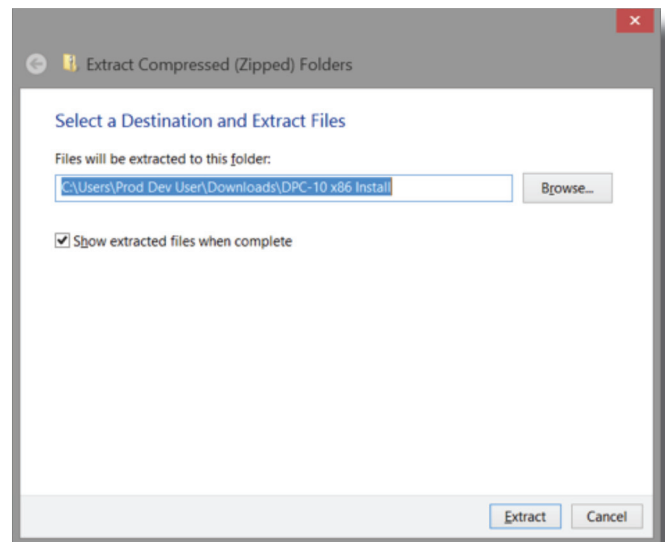
## DPC-10 Software Installation for 64 bit Operating Systems (Windows 7, 8 and XP)

**⚠ WARNING – Do not plug the DPC-10 into your computer until told to do so later in this manual.**

1. Download Installation file DPC-10 64bit Install File DPC-10x64.zip from [www.hitecrd.com](http://www.hitecrd.com)

2. Right click on the file and select "Extract All." Make sure the show extracted files box is checked.

3. Now that the files have been extracted, run the file "Setup." You may be prompted by Microsoft User Account Control asking if you would like to make changes to your computer. Click yes to proceed with the installation.



# DPC-10

Hitec Brushless Servo PC Programming Interface

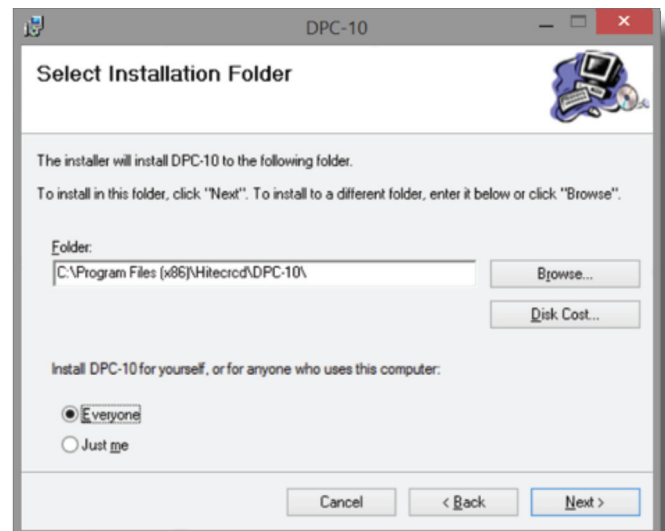


## DPC-10 Software Installation for 64 bit Operating Systems (Windows 7, 8 and XP)

4. You are now at the DPC-10 Setup Wizard. Click "Next" to continue.



5. You will be prompted to select an installation folder and whether you want to give all users access to the DPC-10 software. It is recommended that you use the default folder. Click "Next" to continue.



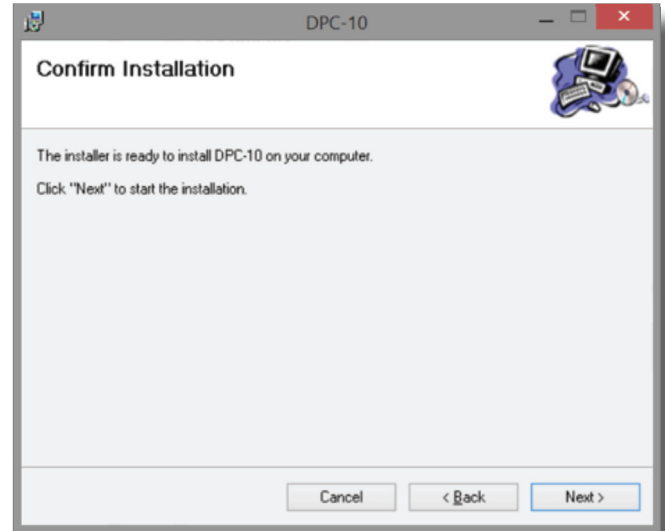
# DPC-10

Hitec Brushless Servo PC Programming Interface

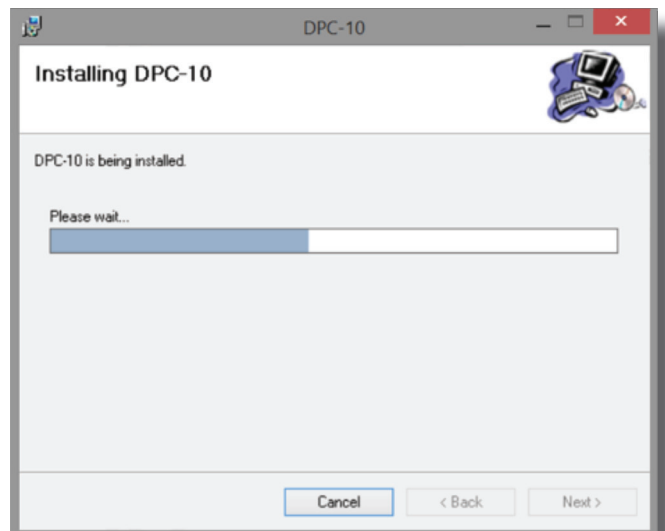


## DPC-10 Software Installation for 64 bit Operating Systems (Windows 7, 8 and XP)

6. At the "Confirm Installation" screen, click "Next" to start the installation.



7. The Installing DPC-10 screen will appear with a status bar indicating its progress.



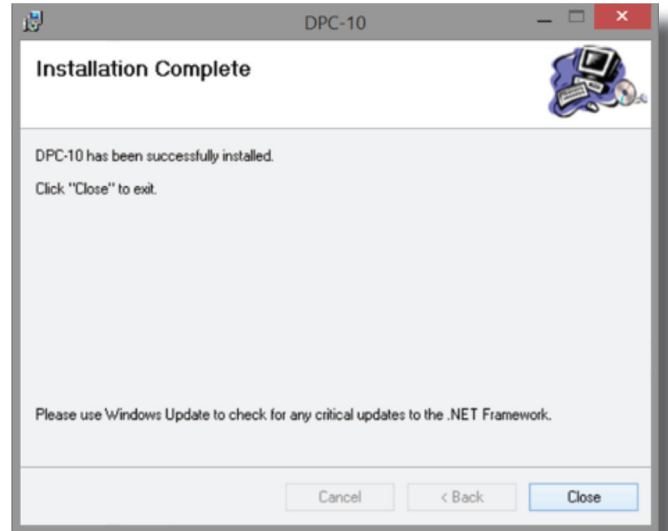
# DPC-10

Hitec Brushless Servo PC Programming Interface



## DPC-10 Software Installation for 64 bit Operating Systems (Windows 7, 8 and XP)

8. Once the installation is complete, click "Close" to exit the DPC-10 software installation program.

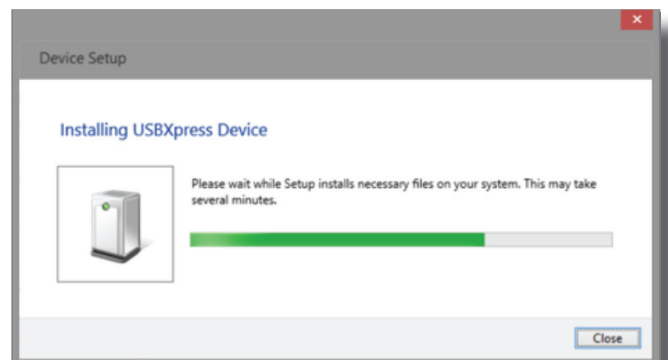


## Connecting the DPC-10

**⚠ WARNING – It is imperative that you use a USB 2.0 compliant cable to connect your DPC-10 to your computer. Non-compliant cables will cause erratic operation or may not work at all.**

1. Plug the USB cable into your computer and the DPC-10. Windows will automatically locate and install the correct driver.
2. Once installed, launch the DPC-10 Software from the icon on your desktop.
3. To use the DPC-10 software, refer to the DPC-10 Software Manual in the directory where you extracted the downloaded file.

Help is available from the Hitec office through phone support and e-mail. Our US office is generally open Monday thru Friday, 8:00AM to 4:30PM PST.



**Phone:** (858) 748 - 8440

**E-mail:** [service@hitecrd.com](mailto:service@hitecrd.com)

**Web:** [www.hitecrd.com](http://www.hitecrd.com)