

## HPP-22 / HTS-SS (BLUE) Software Update Instruction Ver.1.11

- (1) The HPP-22 Software program has been upgraded to monitor the telemetry information of the HTS-SS Blue electric model telemetry system. These added functions include the ability to monitor Current, Voltage, and Wattage.
- (2) To launch HTS-CC (Hitec Telemetry System Command Center), click the HTS-CC button in the HPP-22 software program. ('A' in below diagram.)



Before launching the HTS-CC program, you must establish a connection with your PC utilizing either the HPP-22 or HTS-Navi



To ensure proper operation of the 2.4GHz Telemetry System, you must update the firmware of all interlinked devices including the transmitter or module and receiver that all devices



### (3) Using the HPP-22 Wired Connection

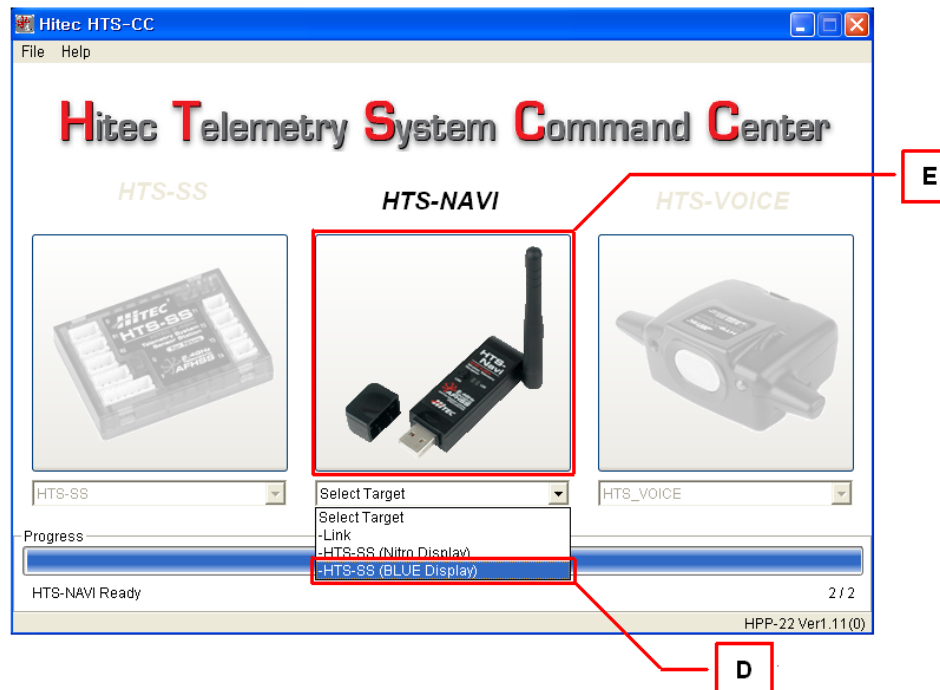
When using the HPP-22 the sensor station will be highlighted (as shown by **C**) in the HTSCC. In the "Select Target" menu choose HTS-SS Blue (as shown by **B**). Once selected the sensor data screen will appear.



To ensure that the telemetry information is displayed properly, make sure you select the type of sensor station (HTS-SS NITRO or HTS-SS BLUE) that you are using in your plane or car.

### (4) Using the HTS-Navi Wireless Connection

When the HTS-NAVI is connected to your PC, the HTS-NAVI menu (as shown by **E**) will be highlighted and activated automatically. In the "Select Target" menu choose HTS-SS Blue (as shown by **D**).



After selecting the proper sensor station, turn on the linked transmitter. Sensors data display window will pop up (as shown by F). Click YES and turn the power on in your Plane or Car where the sensor station is, the sensor data screen will now appear.



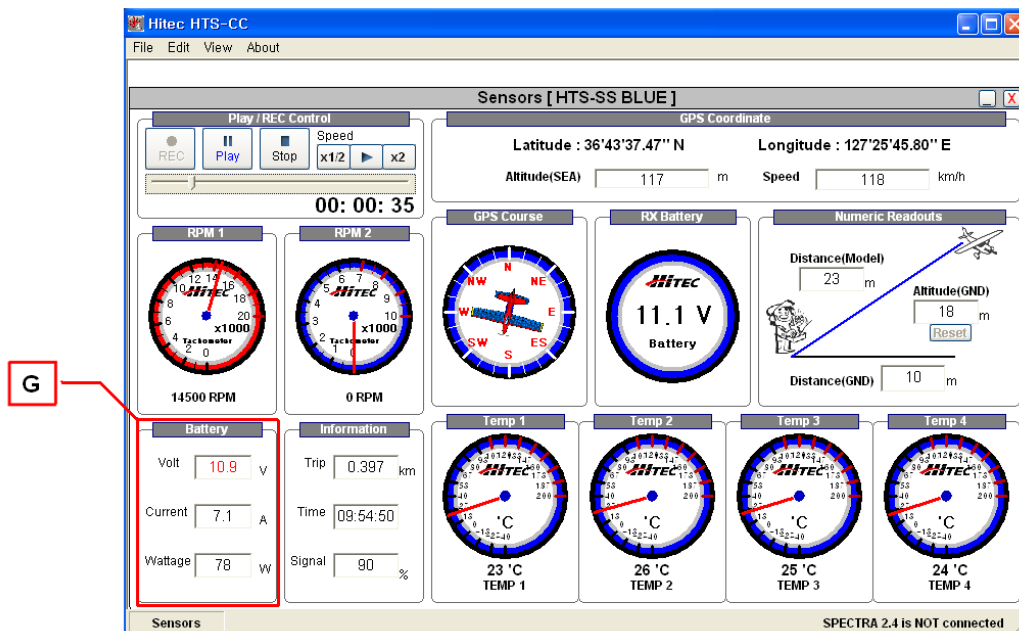
The Sensor data display prompt (as shown by F) will only appear if you have established a link with HTS-NAVI and the Transmitter or Spectra 2.4 Module. To establish a link between the HTS-NAVI and the Transmitter or Spectra 2.4 Module, refer to HTS-NAVI manual.



If you have both a HPP-22 and a HTS-NAVI connected to your PC, the Sensor data display prompt will not appear. Disconnect one of the devices and re-launch the HTSCC program

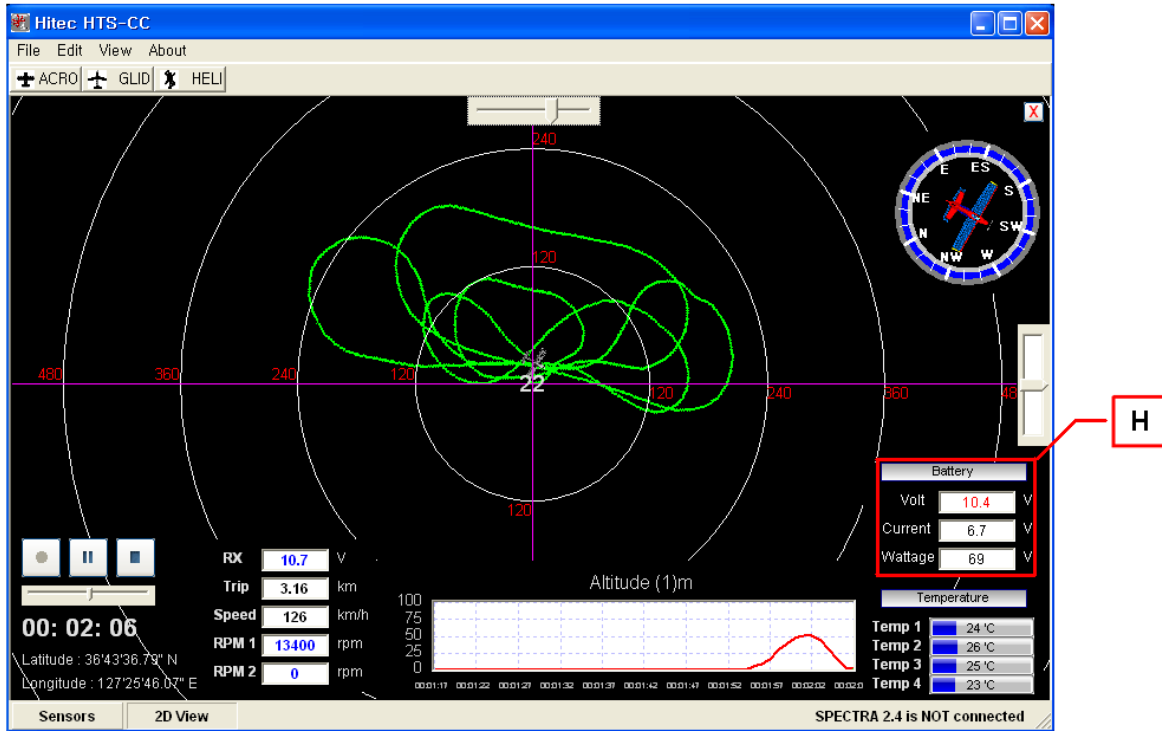
### (5) Sensor Display Screen

The HTSCC Blue sensor display screen display adds a screen for the display of Battery Voltage, Current draw and Wattage. (as shown by 'G')

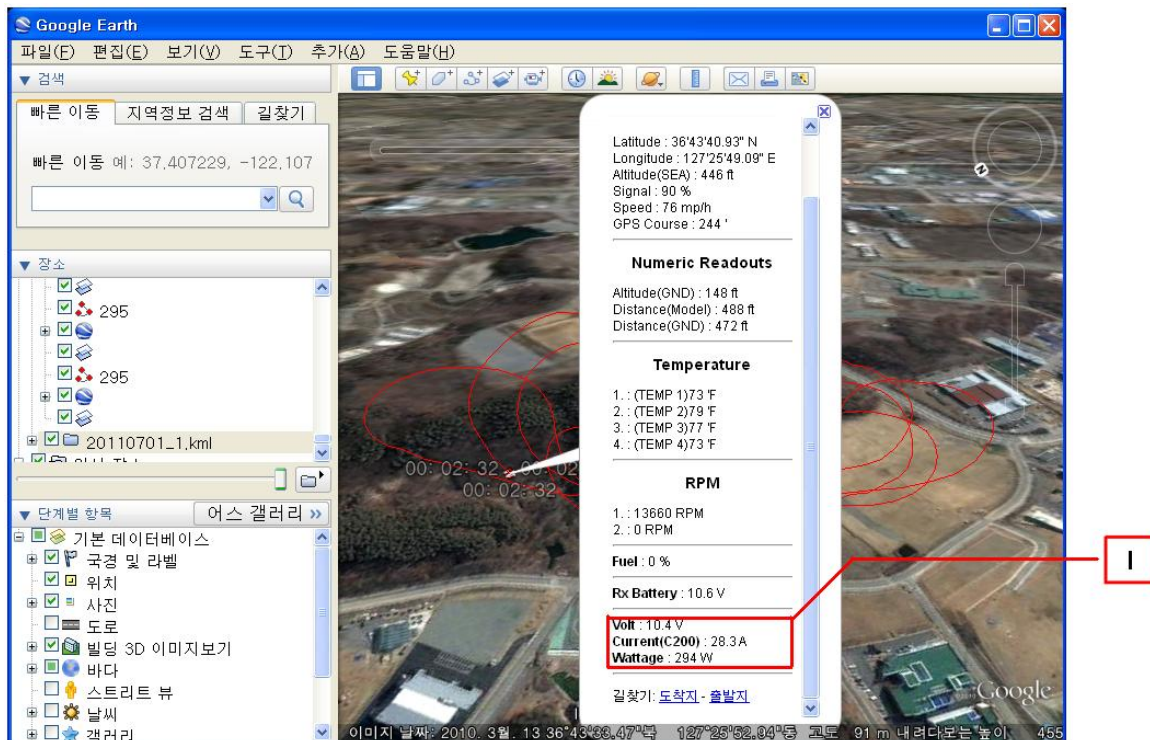


## (6) 2D / 3D Display Screen

The new HTS-SS BLUE data screen can be seen in both the 2D and 3D display screens. (refer to 'H' and 'I' below)



When you click on the plane you are controlling, the new HTS-SS BLUE data screen can be seen in the Google Earth 3D display.



## (7) Warning and Current Sensor setup

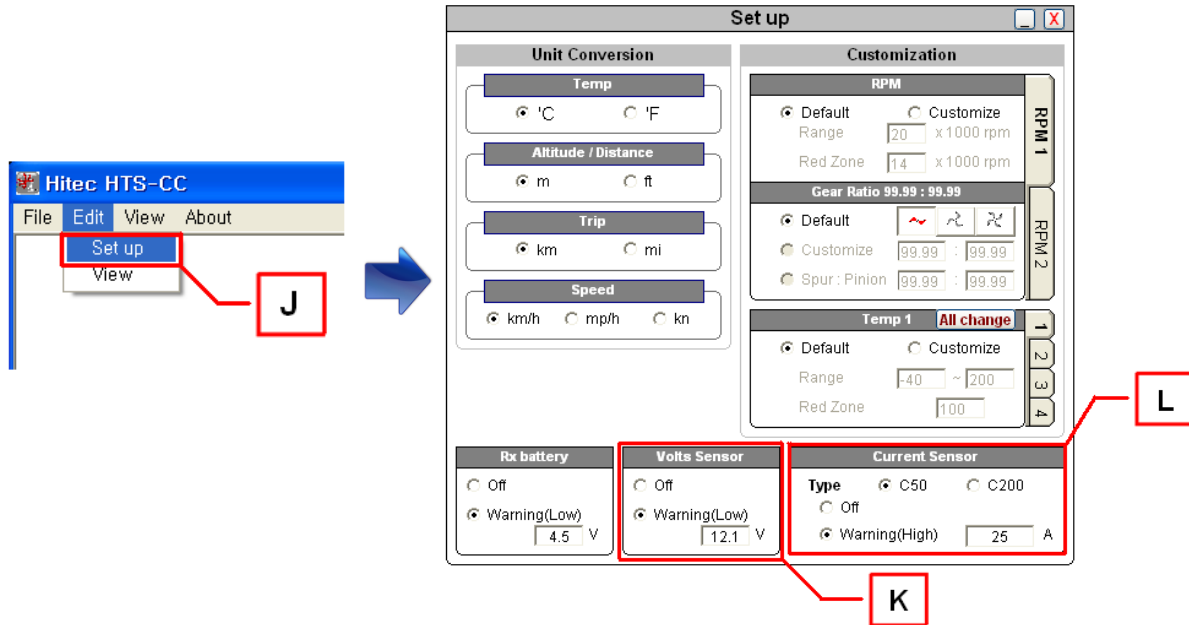
To edit the sensor values, select Edit on HTS-CC main menu and then select Set up from the drop down menu.

**Voltage Sensor Warning** ('K' in diagram below): Adjustment Range: 0.1v - 99.9V in increments of 0.1v

**Current Sensor Warning** ('L' in diagram below)

**C-50** Sensor Adjustment Range: 0.1A to 50A in increments of 0.1A

**C-200** Sensor Adjustment Range: 0.1A to 200A in increments of 0.1A



If you are using a C-50 current sensor in your Plane or Car and then select C-200 in your PC program the telemetry information will display incorrectly.



Make sure to turn off the receiver battery warning function when using the SPC function on your receiver. Using both battery warning functions together may result in incorrect information on the display.